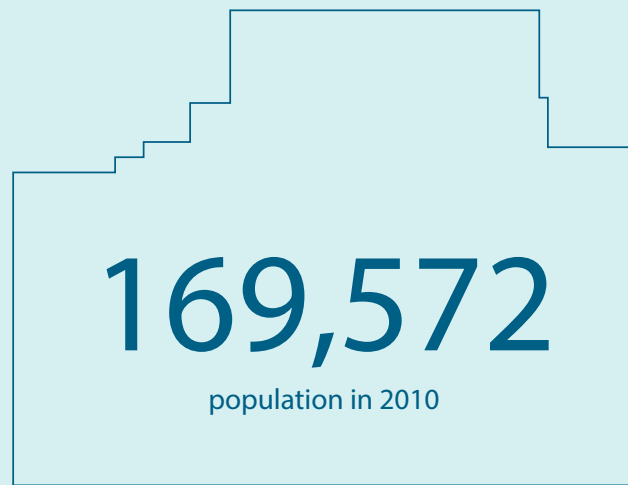


OVERALL WORK PLAN

MCLEAN COUNTY, ILLINOIS





FY 2019 (JANUARY 1, 2019–DECEMBER 31, 2019)

OVERALL WORK PLAN

For Planning and Related Activities to Be Performed by
McLean County Regional Planning Commission (MCRPC)
in Cooperation with Federal, State,
and Local Units of Government

The preparation of this report was financed in part through a technical studies grant from the U.S. Department of Transportation: Federal Highway Administration and Federal Transit Administration.

This work program is intended to comply with Title VI of the 1964 Civil Rights Act (42 U.S.C. 2000d-1) and Executive Order No. 12898 on environmental justice issued on February 11, 1994. Title VI of the Civil Rights Act (42 U.S.C. 2000-1) states that "No person in the United States shall, on the grounds of race, color, or national origin, be excluded from participation in, be denied the benefits of, or be subjected to discrimination under any program, or activity receiving Federal financial assistance." The Executive Order on environmental justice further amplifies Title VI by providing that "each Federal agency shall make achieving environmental justice part of its mission by identifying and addressing, as appropriate, disproportionately high and adverse human health or environmental effects of its programs, policies, and activities on minority populations and low-income populations." These items are addressed under work elements 304 and 308 of this Unified Work Program, wherein issues relating to policies affecting transportation, housing, employment and other planning considerations affecting minority and low-income populations are addressed.



VISION

MCRPC is the leader for [planning tomorrow's McLean County](#).

MISSION

We bring expert planning, deep local knowledge and vibrant public participation as we shape our future to promote opportunity, livability, and sustainability.

VALUES

REGIONALISM

We believe regionalism is the cornerstone of our existence, and our unique regional perspective provides us the vantage point to address issues that extend beyond traditional boundaries.

- We are the catalyst for building consensus from diverse viewpoints.
- We provide forums that facilitate regional dialogue.
- Our planning process promotes regional unity.

GOVERNANCE

We feel policy decisions are best made by the level of government closest to the people.

- We directly involve local governments in our decision-making process.
- Our process operates through the Commission, an executive board of local government and agency representatives.
- The Commission is supported by the Executive Committee and numerous study, technical, and policy committees.

PROFESSIONALISM & EXCELLENCE

We provide high quality services through well-trained, technically proficient staff.

- We offer informed and professional technical assistance.
- We have a firm commitment to dedicated, high-quality public service.
- We hold ourselves accountable to municipalities, the public, and granting authorities.

SERVICE

We serve the planning needs of communities of McLean County individually and collectively.

- We advance the recognition that healthy communities balance diverse needs.
- We work collaboratively with local governments, area organizations, private entities and other public-private efforts to achieve that balance.

ADVOCACY

We advocate on behalf of our regional community at all levels of government.

- We maintain an objective and impartial approach to issues.
- We adhere to strong standards of professionalism in all aspects of our work for the betterment of the Region.

INNOVATION

We recognize our communities are best served by our ability to anticipate the consequences of dynamic change.

- We focus on innovative solutions to both existing and future challenges facing local governments and the region, grounded in respect for our history and culture.

INCLUSION

We engage the public in an open and broadly participatory planning process.

- We seek active participation and welcome alternate views of all groups.
- We ensure that all citizens have the opportunity to observe, debate, question, and participate in the planning process.

TABLE OF CONTENTS

Committee Members	6
Introduction	7

<div>1</div> <div>  </div> <div> <p>Projected Five-Year Work Program 11</p> <p>Work Elements 12</p> <p>Organizational Structure 14</p> </div>	<div>3</div> <div>  </div> <div> <p>Contract Costs 23</p> <p>Scope of Services 24</p> <p>Projected Funding 27</p> <p>Project Cost Allocation 27</p> <p>Methodology</p> </div>
<div>2</div> <div>  </div> <div> <p>Program Summary & Budget 17</p> <p>Staffing Requirements 18</p> <p>Costs 18</p> <p>Funding 21</p> </div>	<div>4</div> <div>  </div> <div> <p>Project Budgets 29</p> </div>

Appendix: FY 2019 Indirect Cost Allocation Plan (ICAP)	47
--	----

List of Illustrations

EXHIBITS

Exhibit A	FY 2019 Work Elements and Tasks.	8
Exhibit B	Projected Five-Year Strategic Priorities	13
Exhibit C	Organizational Chart	15
Exhibit D	FY 2019 Transportation Related Work Elements and Tasks.	25
Exhibit E	Cost Allocation Methodology.	26

CHART

Chart 2.1	FY 2019 Program Funding Sources	21
-----------	---	----

TABLES

Table 2.1	Allocation of Staff Hours by Work Element	18
Table 2.2	Line Item Budget.	19
Table 2.3	Program Funding Sources	20
Table 3.1	Projected Funding for Transportation Planning Elements	24
Table 3.2	FY 2019 Budget by Cost Item.	28
Table 3.3	Itemized Cost Report for FHWA PL & FTA Section 5305(d) Funds.	28



MCLEAN COUNTY TRANSPORTATION COMMITTEES

POLICY COMMITTEE

Carl Teichman, Chair
Chair, McLean County Regional Planning Commission

Tari Renner
Mayor, City of Bloomington

Chris Koos
Mayor, Town of Normal

William Caisley
Chairperson, McLean County Board Transportation Committee

Scott Neihart
Program Development Engineer, IDOT, District 5

TECHNICAL COMMITTEE

Vasudha Gadhiraaju, AICP, Chair
Executive Director, McLean County Regional Planning Commission

Tim Gleason
City Manager, City of Bloomington

Pamela Reece
City Manager, Town of Normal

Bill Wasson
County Administrator, McLean County

Wayne Aldrich
Director of Public Works, Town of Normal

Jim Karch
Director of Public Works, City of Bloomington

Jerry Stokes
County Engineer, McLean County

Robert Nelson
Planning and Services Chief, IDOT, District 5

Dan Magee
Federal-Aid Coordinator, IDOT, District 5, Local Roads

Carl Olson
Director, Bloomington-Normal Airport Authority

Isaac Thorne
General Manager, Connect Transit

LOCAL GOVERNMENT PLANNING STAFF

Katie Simpson
City Planner, City of Bloomington

Mercy Davison, AICP
Town Planner, Town of Normal

Philip Dick, AICP
Director of Building and Zoning, McLean County

MCLEAN COUNTY REGIONAL PLANNING COMMISSION

COMMISSIONERS

Carl Teichman
Chairman, Town of Normal

Mary Kramp
Vice Chairman, County of McLean

Jim Fruin
MCRPC Commission Representative on Executive Committee, County of McLean

John Burrill
Water Reclamation District

Mary Jefferson
Town of Normal

Carl Olson
Airport Authority

Kelly Pyle
Unit School District #5

Mark Wylie
Charter School District #87

EXECUTIVE COMMITTEE

Carl Teichman
Chairman

Mary Kramp
Vice Chairman

Jim Fruin
MCRPC Commission Representative

Pamela Reece*
City Manager, Town of Normal

Tim Gleason*
City Manager, City of Bloomington

Bill Wasson*
County Administrator, County of McLean

Vasudha Gadhiraaju*
Executive Director, MCRPC

MCRPC STAFF

Vasudha Gadhiraaju, AICP
Executive Director

Jordan Brown
Office Manager

Jennifer Sicks, AICP
Senior Planner, Transportation

Lauren Gibson
Community Planner,

Alyssa Cooper
Community Planner

Teresa Anderson
Assistant Planner

* Non-voting members



INTRODUCTION

This Overall Work Program (OWP) identifies all the planning projects to be accomplished by MCRPC during the fiscal year 2019 (January 1, 2019 through December 31, 2019). These planning efforts are funded with federal, state and local resources. The OWP discusses the planning priorities and the specific programs to meet those needs. It serves as a management tool for MCRPC as well as its policy committees and advisory groups. It additionally provides local and state agencies a focal point for improving regional coordination and reducing duplication of work efforts at all levels. The work contained in this OWP complies with federal and state requirements.

This OWP identifies eight proposed Work Elements and several Tasks under each Element with line item budgets in support of those activities for MCRPC's new fiscal year FY 2019 (January 1 - December 31 2019). See Exhibit A Work Elements and tasks.

MCRPC is the designated MPO for the Bloomington-Normal urbanized area. Each year MPOs are required to prepare a Unified Work Program (UWP) to describe all anticipated transportation planning activities. In the years past, MCRPC's fiscal year was the same as that of the State (July 1 to June 30) and hence the UWP served as the OWP for the agency. Due to recent regulatory changes, originating from the Grants

Accountancy and Transparency Act (GATA), MCRPC is mandated to be part of McLean County's single audit. This requires that the MCRPC fiscal year match with that of the County (January 1 to December 31).

Several Elements listed in this OWP, 300, 400, 500, and 600, are transportation related. The Unified Work Program (UWP) Amendment #1 for FY 2019 (July 1 2018 - June 30 2019) will dictate the deliverables, and other reporting requirements for these tasks. The UWP will be approved by the MCRPC's Transportation Technical and Policy Committees prior to July 1 of each year. The OWP will be approved by the Commission prior to December 1 of each year.

EXHIBIT A

FY 2019 Work Elements and Tasks

MCRPC

100 General Administration

101 General Administration

200 Local Planning and Technical Assistance

201 Greenways
202 BN Advantage
203 Economic District Designation (EDD)
204 Support local activities and initiatives
205 Other

210 Regional Housing Initiatives

211 Administration
212 Data, Metrics, and Maps
213 Unified Consolidated Plan and Assessment of Fair Housing (AFH)
214 Programming support
215 Housing Toolkit
216 Other

300 Comprehensive Planning and Technical Assistance

301 Regional Comprehensive Plan
302 Coordination of development activity
303 Toolkit
304 Environmental Planning
305 Other

400 Transportation Planning and Technical Assistance

401 Transportation administration and technical assistance
402 Transportation Improvement Program (TIP)
403 Complete Streets and Transit Oriented Development
404 Sustainable Transportation Programming
405 Regional Health Initiatives
406 BN Mobile - LRTP
407 Travel Demand Modelling

500 Data Gathering, Technology, and Smart Cities

501 Research and outreach
502 Innovative projects
503 Data gathering and dashboard
504 Spatial data and maps

600 Education and Outreach

601 Website and social media
602 Outreach efforts
603 Publications

700 HSTP

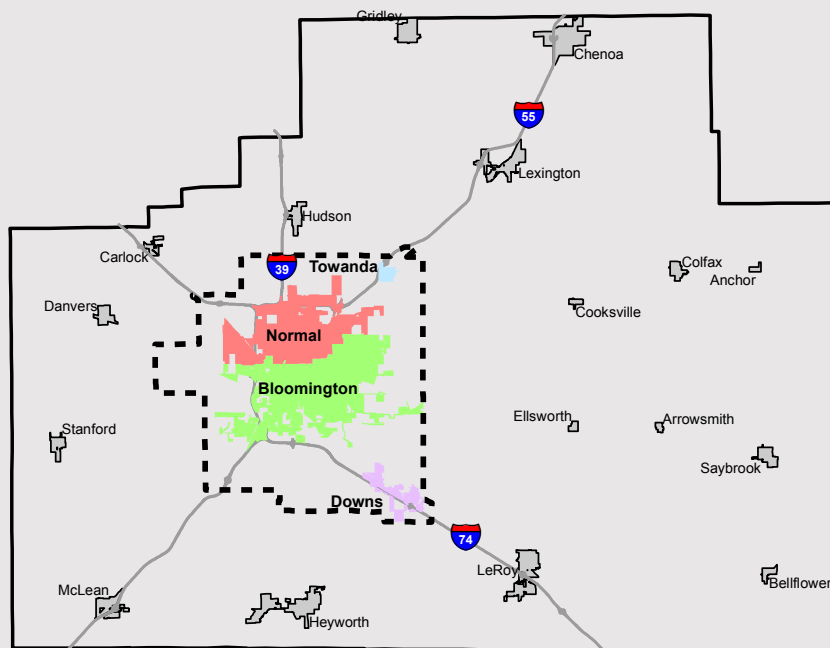
701 HSTP Administration and technical assistance
702 HST Plan updates and monitoring progress
703 Mobility Management
704 Rural Transit Pilot Project

PURPOSE & ROLE OF A METROPOLITAN PLANNING ORGANIZATION (MPO)

A MPO is a transportation policy-making organization composed of representatives from local government and transportation implementers. The 1962 Federal-Aid Highway Act required the formation of a MPO for all urbanized (metropolitan) areas with a population greater than 50,000. MPOs were established to ensure that existing and future expenditures for transportation projects and programs were based on a comprehensive, cooperative, and continuing (3C) planning process. Federal funding for transportation projects and programs are channeled through this planning process. Over successive authorization cycles leading to the passage of FAST act in 2015, Congress has added and revised substantive content expected from the 3-C process.



MCRPC is the designated MPO for the Bloomington-Normal urbanized area. Current members include the City of Bloomington, Town of Normal, McLean County, Connect Transit and Airport Authority, along with the Illinois Department of Transportation (IDOT), Federal Highway Administration and Federal Transit Administration. Each year, MPOs are required to prepare a Unified Work Program (UWP) in cooperation with member agencies, to describe all anticipated transportation planning activities over the course of the upcoming state fiscal year. The UWP is an essential step in the development of a continuing, cooperative, and comprehensive (3C) transportation planning process in an urbanized area. Please refer to the MCRPC UWP document for



McLean County Metropolitan Planning Area

Fixing America's Surface Transportation (FAST) Act

The FAST Act was signed into law in 2015—the first federal law in a decade to provide multi-year funding for surface transportation infrastructure planning and investment. It addresses all modes of transportation and enhances many of the existing provisions and programs defined in past transportation legislation. FAST Act defines nine specific planning factors to be considered when developing transportation plans and programs in a metropolitan area to ensure consistency with national goals and objectives:

1. Support the economic vitality of the metropolitan area, especially by enabling global competitiveness, productivity, and efficiency.
2. Increase the safety of the transportation system for motorized and non-motorized users.
3. Increase the security of the transportation system for motorized and non-motorized users.
4. Increase the accessibility and mobility options available to people and for freight.
5. Promote efficient system management and operation.
6. Local planned growth and economic development patterns.
7. Protect and enhance the environment, promote energy conservation, improve quality of life, and promote consistency between transportation improvements and state and enhance the integration and connectivity of the transportation system, across and between modes, for people and freight.
8. Emphasize the preservation of the existing transportation system.
9. Improve the resiliency and reliability of the transportation system and reduce or mitigate stormwater impacts of surface transportation.
10. Enhance travel and tourism.






PROJECTED FIVE-YEAR WORK PROGRAM



This section identifies MCRPC activities to be completed in support of the overall agency mission and Federal and State guidelines for transportation planning.



The MCRPC actively monitors development and is actively engaged in the periodic updates of the plans to ensure maximum effectiveness and applicability. These philosophies are embedded in the MCRPC's long range planning strategy and are reflected in the Projected Five-Year Work Program as well as this OWP. Additionally, transportation related activities specifically address the provisions of the FAST Act and embody the planning guidelines set forth in 23 CFR 450.

The five-year program will be updated and extended each year as part of the annual process of preparing the OWP. Thus, the projected five-year work program will continue to be an important component of the OWP as it serves to illuminate the vision of the work that lies ahead.

Work Elements

100—General Administration

This encompasses the general administration and support of the 3C transportation process to ensure that state and local partners maintain eligibility for the use of federal transportation funds to improve area surface transportation systems. Tasks include administering the planning activities identified in the adopted OWP and UWP, budgeting, personnel and financial management, conducting regular meetings with Commission, Executive Committee and other special committees and task forces, issuing requests for proposals as needed, entering into contracts and agreements, attendance at conferences and workshops, coordination with IDOT, FHWA and FTA staff to determine new directions in policy and program content. Major work products under this element include creation of a OWP and UWP, correspondence of financial and performance reports, technical memoranda and invoices.

200— Local Planning and Technical Assistance

This work element encompasses planning and technical assistance on local projects that directly support individual municipalities. Tasks may include data collection, spatial analysis and planning at neighborhood, intersection, street or other micro

levels, support for non-transportation oriented regional projects like Greenways, Solid waste planning, BN Advantage, watershed related activities and technical assistance on ordinance reviews and grant writing. The actual tasks and scope will be determined based on the need

210 - Regional Housing Initiatives

The Bloomington Normal Regional Housing Study, completed in 2017, identified housing gaps and opportunities in Bloomington-Normal and McLean County. This work element will encompass activities that contribute towards its implementation. Such activities include establishing advisory committees to address innovative housing solutions as well as affordable and supportive housing issues, conduct unified Consolidated Planning activities for Bloomington and Normal, complete Assessment of Fair Housing, gather and distribute housing related data in McLean County.

300- Comprehensive Planning and Technical Assistance

This element seeks to improve coordination between land use and transportation planning, support the economic vitality of the community, promote smart growth to increase accessibility and mobility options available to people of all ages and abilities, protect and enhance the environment, promote energy conservation and improve quality of life and place. Tasks include creating and updating comprehensive and land use plans in urban and rural areas of McLean County, coordinating subject specific plans such energy planning, development reviews for consistency with land use and transportation plans, and technical assistance on implementation of the comprehensive plans and Transportation and Land Use Connection (TLC) program grants. Major work products for the fiscal year include consistency reviews, compilation of GIS data sets needed to conduct the regional comprehensive plan, spatial analysis and rural comprehensive plan for at least one rural community in McLean County. Work products could also include an interactive development review application, TLC grant Program, and data analysis in preparation of regional comprehensive plan.

Exhibit B

Projected Five-Year Strategic Priorities (Adopted: March 7 2018)

Work Element by Category	Activity by Fiscal Year				
	2019	2020	2021	2022	2023
*Rural planning					
Regional Comprehensive Plan					
Regional housing initiatives					
Coordination of development activity					
Regional economic development efforts					
*Regional Energy Plan					
*Regional environmental planning					
*Neighborhood planning/Historic Preservation					
Transportation Administration Streamlining					
Complete streets, TOD and placemaking					
Regional health initiatives					
BN Mobile: LRTP Update					
Multi-modal travel demand modelling					
Human Service Transportation Planning					
Tracking and reporting data					
Toolkit of best practices and resources					
Data gathering and dashboards					
Spatial data and maps					
Research, education, and advocacy on technology					
*Establish innovation district					
*Technology pilot projects					
*Regional technology plan					
Website, and social media					
Outreach					
Publications					
Professional development					

..... Ongoing activities
 — Intense activities
 Activity specifics unknown at this time

Note: Strategic priorities identified with an * are unfunded or underfunded at the time these priorities were approved by the Executive Committee and the Commission. The exact scope of work activities will be determined based on the availability of funding during each fiscal year.

400—Transportation Planning and Technical Assistance

This work element encompasses activities that directly support the implementation of the Long Range Transportation Plan (LRTP). Tasks include updates to the 2045 LRTP as needed, transportation administration and technical assistance, creation and amendment to Transportation Improvement Program (TIP), design guidelines for Complete Streets and Transit Oriented Development, promotion of sustainable modes of transportation and active living, data monitoring, analysis and travel demand modelling. Major work products include the regional transportation dashboard and a multi-modal travel demand model.

500—Data Gathering, Technology and Smart City

Every aspect of the community is being affected by technology. There is a great deal of innovation (or disruption depending on how you look at it) happening in transportation and land use. As part of this work element MCRPC will bring the research and education on Technology and Smart Cities to a variety of stakeholders in McLean County. Track performance metrics of the plans and programs facilitated by MCRPC. This includes LRTP and the comprehensive plans. Major work products include spatial analysis, online toolkit, and web based dashboards, and facilitate pilot/ test projects.

600—Education and Outreach

This work element involves educating members of the community on the importance of their engagement in planning for the future of Bloomington-Normal and McLean County. It involves gathering meaningful input on transportation and comprehensive plans from residents of all walks of the community utilizing both traditional and non-traditional methods. Major work products include redesign of MCRPC website, the annual Community Information Forum, Visions newsletters, PARKing Day and other programs as they arise.

700—Human Service Transportation Plan

Human Service Transportation Plan (HSTP) is designed to meet the needs of the transportation

disadvantaged population, including persons with disabilities, individuals with lower incomes, older adults and racial and ethnic minorities. MCRPC administers the IDOT HSTP process for Region 6, a five-county area in east central Illinois which includes Ford, Iroquois, Kankakee, Livingston, and McLean Counties. MCRPC staff serve as regional coordinators, facilitating program and resource coordination among governments, transportation providers, and social service agencies throughout the region. Major work products include the consolidated Rural-Urban HSTP, McLean County Urban and Rural Transit Plan Pilot, a dedicated webpage for HST and a web-based data HST dashboard.

Organizational Structure

MCRPC's work programs are carried out through the interaction of Commission members, elected officials, governmental agencies, and staff. This interaction is graphically illustrated in Exhibit C. Commission membership is composed of eleven citizens nominated by major units of government and appointed by the McLean County Board. The current Commission membership is listed on page 6 of this report.

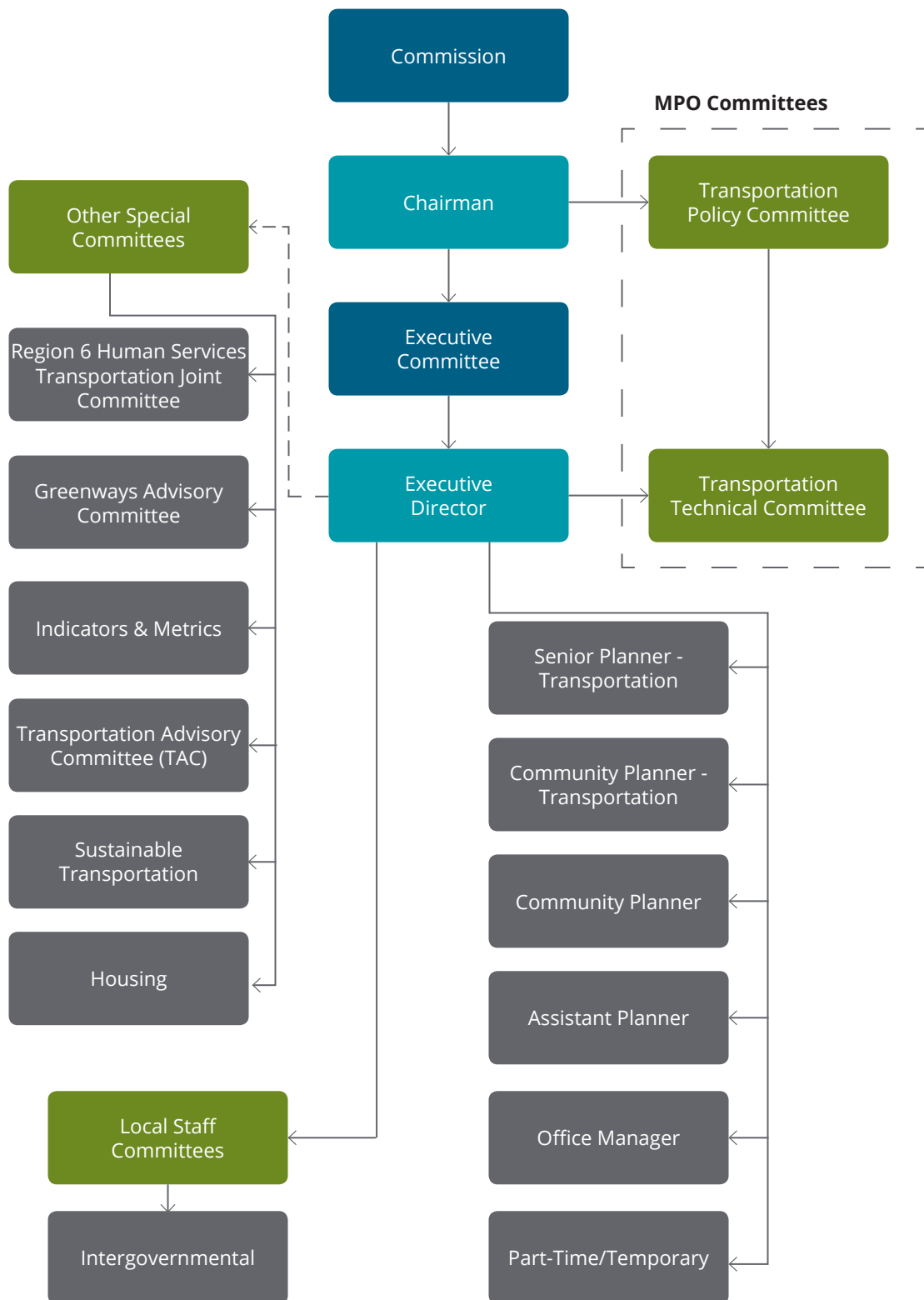
The MCRPC interacts with local and state officials through the Transportation Technical and Policy Committees.


The Commission interacts with local elected officials through the Commission Chairman, who also serves as chairman of that committee. The Transportation Policy Committee also provides for interaction with Illinois Department of Transportation officials as well as local elected officials.

At the staff level, the Commission Chairperson chairs the Executive Committee, which includes three voting Commissioners, and the McLean County Administrator, and the City Managers of Bloomington and Normal and the Executive Director (ED) of MCRPC who serve as the non-voting members. The ED of the MCRPC participates in each of the above committees. ED chairs the Transportation Technical Committee. This committee reports to the Transportation Policy Committee on transportation matters, and includes management and engineering staff from City of Bloomington, Town of Normal, McLean County, Central Illinois Regional Airport Authority, Connect Transit and Illinois Department of Transportation.

Exhibit C

McLean County Regional Planning Commission Organizational Chart





The MCRPC staff also facilitates a variety of Advisory Committees identified in Exhibit C. In addition, staff participates in McLean County Wellness coalition, Route 66, and solid waste technical, and other committees to coordinate activities between the local and regional planning staffs in each of the major work elements.



PROGRAM SUMMARY AND BUDGET



This section presents an overview of the overall work program for the coming year. It presents the estimated total staffing requirements and costs to carry out the identified work activities and includes a line item budget. Also included is a summary of anticipated funding by source and project.

Staffing Requirements

The work program provides for six staff members. In addition to the Executive Director, the budgeted staff positions include office manager, senior transportation planner, two community planners and an assistant planner, and temporary/part-time staff.

Table 2.1 lists the staff allocations to complete the programmed work activities.

Costs

The total estimated cost to implement this work program, including the cost to maintain the MCRPC office and staff, is \$818,190. The anticipated line item costs are illustrated in Table 2.2, along with a break down between direct and indirect costs. Direct costs are chargeable to specific projects and include salaries and non-salary costs, such as materials, services and supplies used directly on projects. Indirect costs, which also include both salaries and non-salary costs, cannot be related to specific projects. Such costs include general administration, supplies, and equipment costs. The indirect charge is added to direct salaries and other direct costs when computing project costs.

The budget provides for 12 different line item expenses, each divided as appropriate between direct and indirect costs. These line item expenses are shown in Table 2.2 and discussed briefly below.

Salaries and Fringes

Salaries and benefits account for over 60% of the budget and constitute the largest expense.

Advertising

Advertising is a direct expense and includes event advertising, public hearing and other required notices.

Dues and Subscriptions

This line item includes professional dues for the staff and subscriptions for the agency.

Miscellaneous

Programmed miscellaneous expenses consist of cost items that do not appropriately fall within the other designated expense categories, such as bank fees and refreshments. It is important to note that no federal funding has not been allocated for refreshments.

Table 2.1

Allocation of Staff Hours by Work Element

UWP CODE	Project	Executive Director	Senior Planner	Assistant Planner	Community Planner 1	Community Planner 2	Office Manager	Part-Time (Entry Level)	Part-Time (Experienced)	TOTAL
100	General Administration	400					1,000			1,400
200	Local Planning & Tech. Asst.	100		450	100	200		1,950		2,800
210	Regional Housing Initiatives	100				1,150		100		1,350
300	Comprehensive Planning	250	350	900	300		150	400	200	2,550
400	Transportation Planning	400	920		350		100		450	2,220
500	Data Gathering, Technology and Smart Cities	400	200	250	700	350	200	650		2,750
700	Education and Outreach	200	130	300	350	250	450			1,680
800	Human Service Transportation Plan (HSTP)	100	350	50	150		50			700
	TOTAL	1,950	1,950	1,950	1,950	1,950	1,950	3,100	650	15,450

Table 2.2

Line Item Budget

Expense Item	Direct	Indirect	Total Costs	Percent of Total Budget
Salaries	\$402,925	\$158,700	\$561,625	65.93%
Advertising	\$3,533	\$500	\$4,033	0.47%
Reference Materials	\$0	\$0	\$0	0%
Dues and Subscriptions	\$2,484	\$1,000	\$3,484	0.41%
Miscellaneous	\$7,586	\$2,600	\$10,186	1.20%
Postage	\$400	\$425	\$825	0.10%
Professional Services	\$195,347	\$9,000	\$204,347	23.99%
Reproduction	\$5,100	\$0	\$5,100	0.60%
Supplies	\$445	\$2,000	\$2,445	0.29%
Software and Support	\$44,500	\$167	\$44,667	5.24%
Telephone	\$0	\$1,200	\$1,200	0.14%
Travel and Training	\$14,000	\$0	\$14,000	1.64%
TOTAL	\$676,320	\$175,592	\$851,912	

Indirect Cost Rate

Methodology: Total Indirect Costs/Direct Salaries and Fringes

Indirect cost rate = 43.6%

Approved Indirect Cost Rate through CARS - 59.6%

Postage

Direct postal expenses are budgeted for the Information Forum mailings. Indirect expenses include general office postage.

Professional Services

The budget for professional services in the indirect rate includes auditor and services for preparation of the indirect cost allocation plan. Direct expenses include a transit studies and technology plan.

Reproduction

Direct expenses include reproduction of plans, reports and other educational materials. Indirect expenses include toner and printer supplies for general reproduction.

Software and Support

The majority of this expense is direct project based. It includes Adobe and GIS software licenses, software that enables commuter challenge, dashboards and other agency activities, website, travel demand modelling, data acquisition, maintenance, and support, for workstations and the agency network.

Supplies

This item includes general office supplies such as printer paper and computers and direct costs include supplies for the information forum.

Telephone

This is an indirect expense.

Travel and Training

The travel and education line item provides a budget for travel incurred in the conducting of MCRPC business, and for expenses to attend appropriate conferences, workshops and seminars intended to increase proficiency and understanding to aid in fulfilling the mission of the agency. This amount includes funding for staff reimbursements for use of personal vehicles and other work related local travel expenses, and training conferences or workshops for staff in accordance to IDOT travel guidelines.

Table 2.3

FY 2019 Program Funding Sources

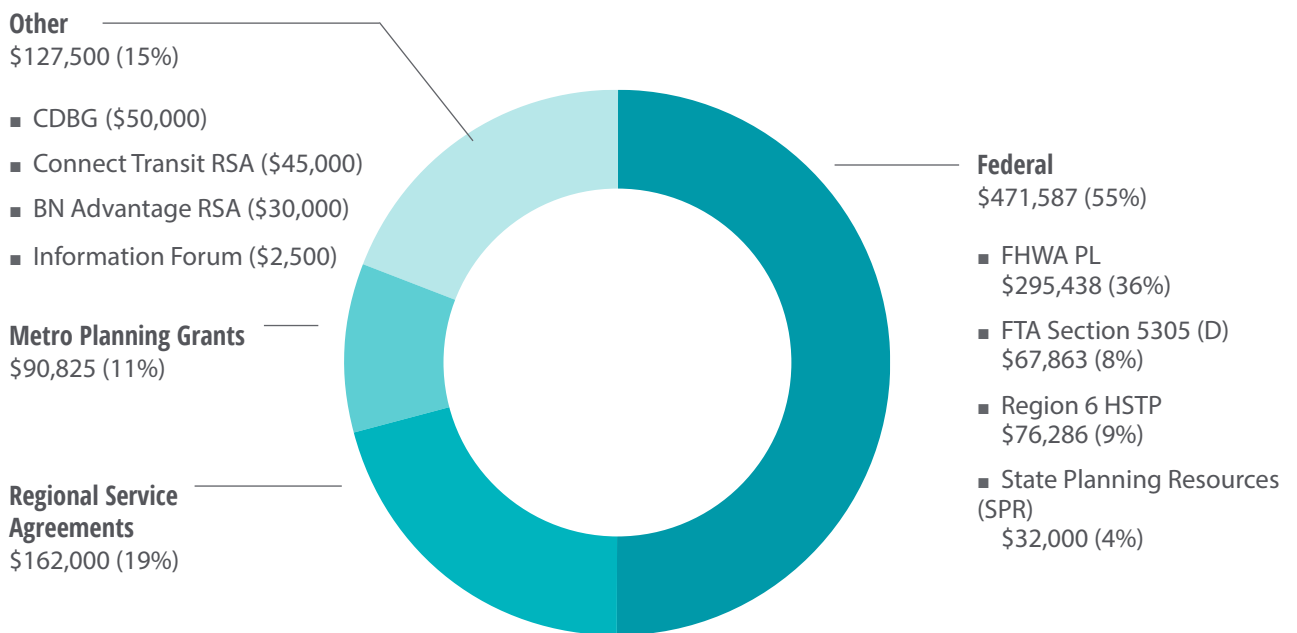
UWP CODE	Program and Project	Budgeted Amount	Federal		Local Match	Technical Service/Other
			FHWA PL	FTA Section 5305(d)		
200	Local Planning and Technical Assistance	\$100,992				\$100,992
210	Regional Housing Initiative	\$60,183				\$60,000
300	Comprehensive Planning and Technical Assistance	\$207,194	\$75,705	\$17,390	\$23,274	\$90,825
400	Transportation Planning and Technical Assistance	\$180,218	\$73,656	\$16,919	\$22,644	\$35,000
500	Data Gathering, Technology, and Smart Cities	\$137,961	\$89,753	\$20,616	\$27,592	\$0
600	Education & Outreach	\$89,078	\$56,324	\$12,938	\$17,316	\$2,500
700	HSTP	\$76,286				\$76,286
TOTAL		\$851,912	\$295,438	\$67,863	\$90,825	\$365,603

Funding

Funding for this year's work program is to come from the sources indicated in Table 2.3 and Chart 2.1. Federal transportation funds will continue to account for a significant part of MCRPC budget with Federal Highway Administration (FHWA-PL) funds totaling \$295,438 and Federal Transit Administration (FTA) funds estimated at \$67,863. The Region 6 HSTP funding is budgeted at \$76,901 for FY2019. Regional service agreements with Bloomington, Normal, and McLean County provide the local match requirement for the PL and Section 5305(d) transportation funds. Regional service agreement funds are also used to complete activities not eligible for federal funding and are noted under the work elements 200 and 210. Funding identified as other comes from a variety of sources including the transit service agreement with Connect Transit, Community Block Development Grant Funding from City of Bloomington and Town of Normal, BN Advantage service agreements with McLean County Chamber of Commerce and Bloomington-Normal Economic Development Corporation (Currently no written agreement). The total amount provided by regional service agreements is \$162,000, divided equally among Bloomington, Normal, and McLean County (\$54,000 each). State Metropolitan Planning Funds of \$89,000 will be used to fund a Regional Technology Study.

Chart 2.1

FY 2019 Program Funding Sources





CONTRACT COSTS



This section presents the scope of services of transportation planning activities to be included in the contract between MCRPC and the Illinois Department of Transportation (IDOT) for the Bloomington-Normal metro area. It identifies line item costs and total agency costs as well as the methodology used to allocate costs. It also summarizes the projected funding levels for transportation related planning activities. This section concludes with a presentation of itemized cost reports for PL and Section 5305(d) funding.

Scope of Services

Those activities in which the Department will participate with federal metropolitan planning funds and FTA Section 5305(d) funds are shown in Exhibit D.

These activities will result in the following major end products by work element.

Work Element 100—General Administration

FY 2019 ICAP, OWP, and UWP; FY 2017 audit report; Quarterly and annual performance reports; Monthly financial reports; and other correspondence.

Work Element 300—Comprehensive Planning Major

Comprehensive Planning Major work products for the fiscal year include consistency reviews, compilation of GIS data sets needed to conduct the regional comprehensive plan, spatial analysis and rural comprehensive plan for one rural community in McLean County, TLC grant program. Work products could include interactive development review application, TLC grant Program, and data analysis in preparation of regional comprehensive plan.

Work Element 400—Transportation Planning

FY 2020–FY2024 TIP; Regional Transportation Dashboard; Travel Demand Model.

Work Element 500—Data Gathering, Technology, Smart Cities

Major work products include spatial analysis, online toolkit, and web based dashboards, educational programs, and pilot/test projects.

Work Element 600—Education and Outreach

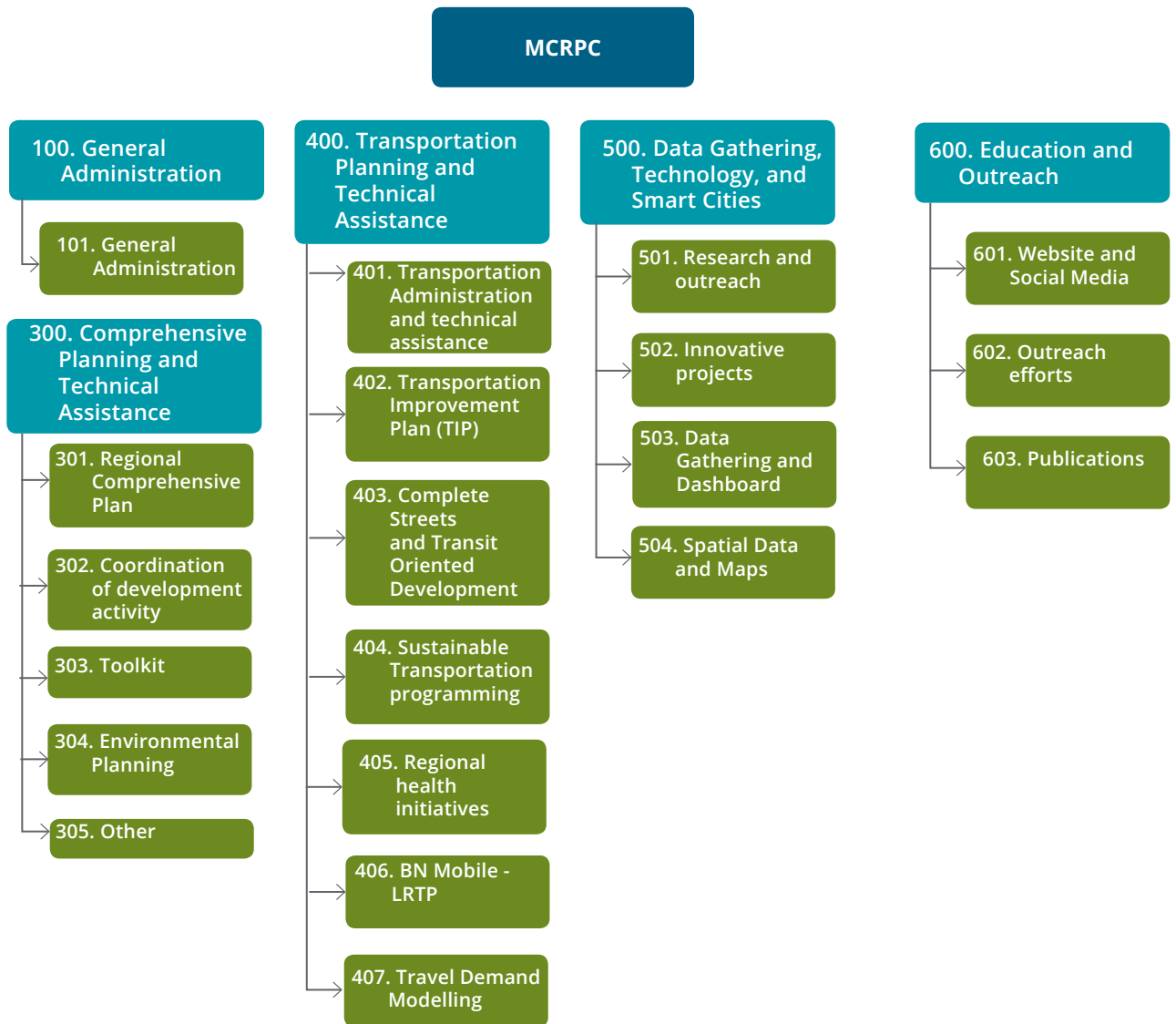
MCRPC website and social media updates; two Visions newsletters; 2019 Information Forum; (PARK)ing Day; and community wide presentation.

Table 3.1

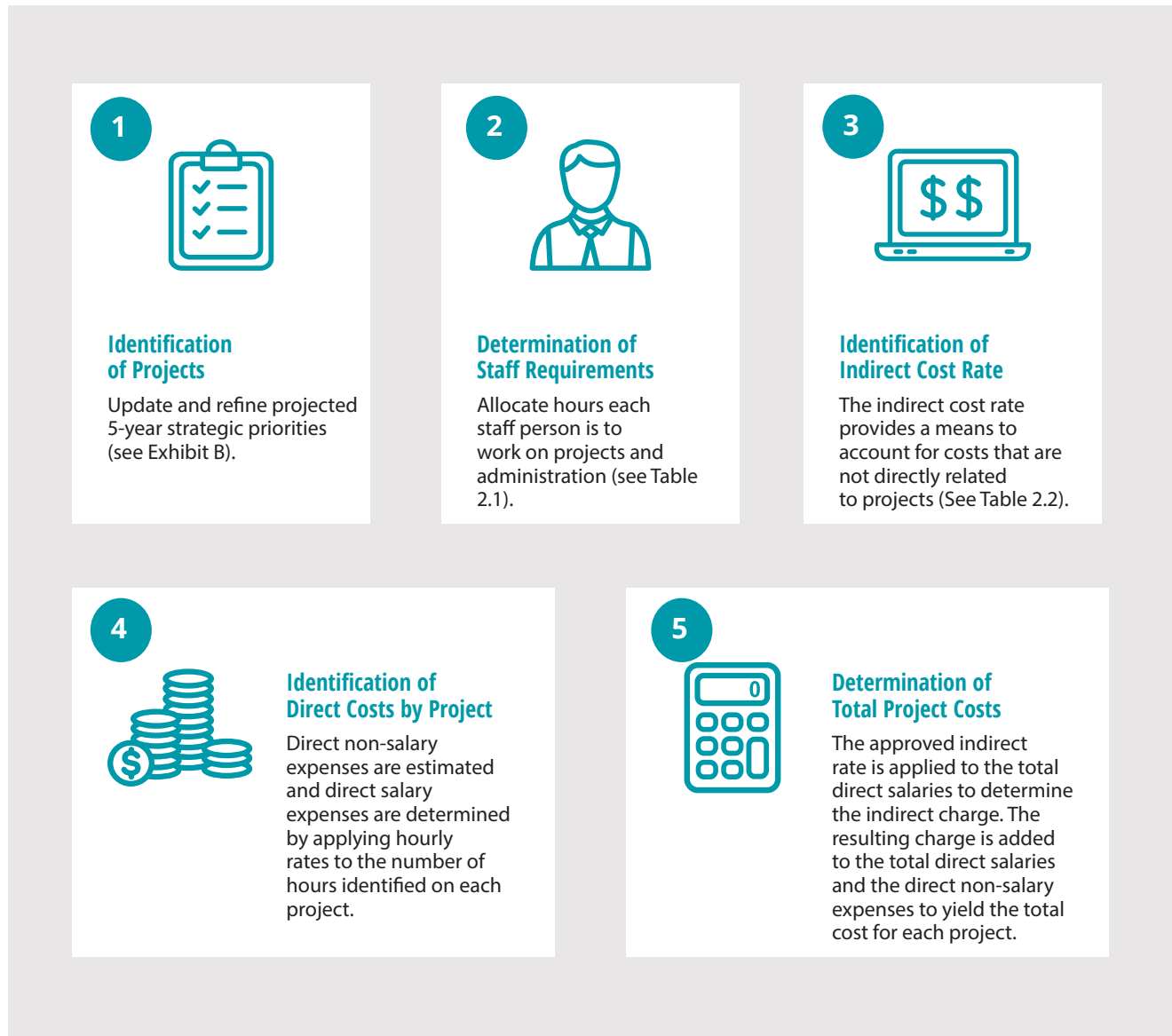
Projected Funding for Transportation Planning Elements

Federal Metropolitan Planning (PL) Funds	\$295,438	80%
Planning Agency	\$73,859	20%
TOTAL FUNDS	\$369,297	100%
FTA Section 5305(d) Funds	\$67,863	80%
Planning Agency	\$16,966	20%
TOTAL FUNDS	\$84,829	100%

FY 2019 Transportation Related Work Elements and Tasks



Cost Allocation Methodology





Projected Funding

Determining projected funding levels is an important part of the programming and budgeting process. The Sections 2 and 4 of this report address this subject in detail. Table 3.1 summarizes the projected funding for PL and Section 5305(d) work activities programmed for FY 2019.

Project Cost Allocation Methodology and Itemized Cost Reports

The cost allocation methodology was developed in accordance with federal planning guidelines for the purpose of allocating funding for MCRPC program areas and transportation program areas in particular. It is presented in order to document the procedures employed in developing this work program. It outlines the procedure used to allocate direct and indirect costs, including the identification of projects, staff requirements, the indirect cost rate and the application of the rate to determine project costs. The methodology is illustrated in Exhibit E. The allocation of line item budget costs for FHWA PL and FTA Section 5305(d) funds are presented in Table 3.2. Table 3.3 identifies the total costs for each work element, along with the amount (80%) to be reimbursed by IDOT and the portion of that total to be provided by PL and Section 5305(d) funds. This report provides a guide for monthly project billings and provides a means to gauge the relative progress towards completing each program area.

Table 3.2

FY 2019 Budget by Cost Item

Cost Item	Federal Funding	Local Match	Total Amount
	PL/FTA		
	80%	20%	100%
Direct Cost			
Personnel Cost			
Executive Director	\$56,390.7	\$14,097.6	\$70,488.3
Senior Planner—Transportation	\$40,929.6	\$10,232.4	\$51,162.0
Associate Planner—Comp	\$27,840.0	\$6,960.0	\$34,800.0
Community Planner 1	\$36,228.7	\$9,057.1	\$45,285.8
Community Planner 2	\$12,720.0	\$3,180.0	\$15,900.0
Office Manager	\$14,723.3	\$3,680.8	\$18,404.1
Temporary/Part-Time (entry level)	\$10,080.0	\$2,520.0	\$12,600.0
Temporary/Part-Time (experienced)	\$17,399.7	\$4,349.9	\$21,749.6
Total for Personnel Services	\$216,312	\$54,077.8	\$270,390
Advertising	843	211	1,054
Dues and Subscriptions	1,907	477	2,384
Miscellaneous	3,123	781	3,904
Postage	320	80	400
Professional Services	8,018	2,004	10,022
Reproduction	2,677	669	3,346
Supplies	340	85	425
Software and Support	27,566	6,892	34,458
Travel and Training	7,928	1,982	9,910
Total Direct Expenses	\$52,722	\$13,180	\$65,902
Indirect Cost	\$94,267	\$23,567	\$117,834
Total Cost	\$363,301	\$90,825	\$454,126

Table 3.3

Itemized Cost Report for FHWA PL and Section 5305(d) Funds

	Program Category	Total Program Category Charges	Amount to Be Reimbursed	PL Contract Limiting Amount	Section 5305(d) Contract Limiting Amount
300	Comprehensive Planning and Technical Assistance	207,194	93,095	75,705	17,390
400	Transportation Planning and Technical Assistance	180,218	90,575	73,656	16,919
500	Data Gathering, Technology, & Smart City Initiatives	137,961	110,369	89,753	20,616
600	Education & Outreach	89,078	69,262	56,324	12,938
	TOTAL	\$614,451	\$363,301	\$295,438	\$67,863



PROJECT BUDGETS



The annual work program identifies individual elements and tasks to be initiated or completed during the fiscal period. This section provides a brief description of each project and identifies the output to be achieved. It also considers the major tasks to be completed for each project and defines the estimated staffing requirements by staff position needed to complete those tasks. Also addressed in this section are total estimated costs to complete the work scheduled for each project.

Work Element 100—General Administration

The Bloomington Normal Regional Housing Study, completed in 2017, identified housing gaps and opportunities in Bloomington-Normal and McLean County. This work element will encompass activities that contribute towards its implementation. Such activities include establishing advisory committees to address innovative housing solutions as well as affordable and supportive housing issues, conduct unified Consolidated Planning activities for Bloomington and Normal, complete Assessment of Fair Housing, gather and distribute housing related data in McLean County.

Accomplishments during FY 2018

- Timely submission of financial and project reports.
- Hired three new staff to replace vacated positions.
- Completion of FY 2017 audit with no significant findings.
- Submission of Indirect Cost Allocation Plan (ICAP) in compliance with new Grant Accountability and Transparency Act (GATA) for FY 2018.
- Creation of FY 2019 UWP
- Updated Bylaws per FHWA audit recommendation
- Diversified revenue sources
- Established five year strategic priorities for MCRPC
- Drafted the new Cooperative Agreement for Continuing Transportation Planning in the Bloomington-Normal Urbanized Area and McLean County, currently in circulation for approval.
- Adopted MCRPC Style Guide

Planned activities during FY 2019

Task 101—General Administration: All general administration tasks including budget, finance and HR management; Streamlining Advisory Committees including establishing clear roles and responsibilities, ensuring that the priorities are formally approved by the three major local government entities; Amendments to contracts and agreements to reflect 5-year priorities as approved by the Executive Committee and adopted by the Commission; obtaining approvals from the state and federal agencies.

Work products

FY 2020 ICAP, OWP and UWP; FY 2018 audit report; quarterly and annual performance reports; monthly financial reports; and other correspondence; clear descriptions of advisory groups along with roles and responsibilities of its membership and the groups project priorities.

GENERAL ADMINISTRATION BUDGET

Non-Salary Expenses

*Payroll taxes (Social Security, FICA, Medicare)	\$32,140
*IMRF	\$38,976
*Health Insurance	\$42,184
General Insurance	\$0
Advertising	\$500
Reference Materials	\$0
Dues and Subscriptions	\$1,000
Miscellaneous	\$2,600
Postage	\$425
Professional Services	\$9,000
Reproduction	\$0
Supplies	\$2,000
Software and Support	\$167
Telephone	\$1,200
Travel and Training	\$0
Equipment	\$11,100
TOTAL MINUS FRINGE	\$27,992

Salaries

Staff Position	Time (Hours)	Dollar Total
Executive Director	400	\$24,400
Senior Planner—Transportation	0	\$0
Associate Planner—Comp	0	\$0
Community Planner 1	0	\$0
Community Planner 2	0	\$0
Office Manager	1,000	\$21,000
Temporary/Part-Time (experienced)	0	\$0
Temporary/Part-Time (entry level)	0	\$0
TOTAL	1,400	\$45,400

Indirect Costs (NA)	\$0
Indirect Salaries + Fringe	\$158,700
TOTAL PROJECT COSTS	\$186,692

Funding Sources

Total Funding	\$186,692
----------------------	------------------

An indirect cost rate at 46% is applied to direct salary costs identified for each project to recover costs for general administration.

Items denoted with an * indicate fringe benefits

Work Element 200—Local Planning and Technical Assistance

This work element encompasses planning and technical assistance on local projects that directly support individual municipalities. Tasks may include data collection, spatial analysis and planning at neighborhood, intersection, street or other micro levels, support for non-transportation oriented regional projects like Greenways, Solid Waste Planning, BN Advantage, watershed related activities and technical assistance on ordinance reviews and grant writing. The actual tasks and scope will be determined based on the need

Accomplishments during FY 2018

- Assemble regional housing advisory and staff committees to work towards BN Home implementation.
- Active Participation in BN Advantage efforts.
- Coordinate Greenways meetings and conducted a successful Greenways Conference in Normal.

Planned activities during FY 2019

Task 201—Greenways: Work with the Greenways Advisory Committee and the Staff Committees on implementing the Greenways Plan.

Task 202—BN Advantage: Support regional economic development efforts, particularly those that overlap with aspects such as transportation, place making, housing, place based incentives and other efforts that impact quality of place; Maintain BN Vitals dashboard.

Task 203 - Economic District Designation (EDD): Explore opportunities to designate McLean County as an EDD.

Task 204 - Support local activities and initiatives: Including assistance with implementation of adopted plans such as the Solid Waste Management Plan, research assistance and ordinance review of local ordinances, grant writing assistance for local governments; Activities will be limited by availability of time, resources and their applicability to the entire region.

Task 205 -Other projects that may arise in support of this element.

LOCAL PLANNING & TECHNICAL ASSISTANCE BUDGET

Direct Non-Salary Expenses	
Advertising	\$0
Dues and Subscriptions	\$100
Miscellaneous	\$0
Postage	\$0
Professional Services	\$30,000
Reproduction	\$1,400
Supplies	\$0
Software and Support	\$0
Travel and Training	\$0
TOTAL	\$31,500

Direct Salaries		
Staff Position	Time (Hours)	Dollar Total
Executive Director	100	\$6,100
Senior Planner—Transportation	0	\$0
Associate Planner—Comp	450	\$10,800
Community Planner 1	100	\$2,800
Community Planner 2	200	\$5,300
Office Manager	0	\$0
Temporary/Part-Time (experienced)	0	\$0
Temporary/Part-Time (entry level)	1,950	\$23,400
TOTAL	2,800	\$48,400

Indirect Costs	\$21,092
Adjusted Salaries (Direct Salaries plus Indirect)	\$69,492
TOTAL PROJECT COSTS	\$100,992

Funding Sources	
Regional Service Agreement	\$70,992
BN Advantage Service Agreement (Chamber + EDC)	\$30,000
Total Funding	\$100,992

Work Element 210—Regional Housing Initiatives

This component seeks to improve coordination between land use and transportation planning in a manner that supports the economic vitality of the metropolitan area. It strives to promote smart growth, protect and enhance the environment, promote energy conservation and improve the quality of life and place in Bloomington-Normal urbanized area.

Accomplishments during FY 2018

- This is a new initiative. No accomplishments to report for 2018.

Planned activities during FY 2019

Task 211 —Administration: General administration of regional housing initiatives including facilitating the two housing advisory committees and the staff committee; Coordination with state and federal housing authorities; Coordination with not-for-profit and other housing stakeholders; Housing related professional development activities.

Task 212—Data, Metrics and Maps: Gather and distribute housing related data in Bloomington-Normal and McLean County on a regular update cycle as deemed appropriate; Create and distribute relevant maps.

Task 213— Unified Consolidated Plan and Assessment of Fair Housing(AFH): HUD strongly encourages regional approach than individual approach. A regional AFH assessment, and a unified Consolidated Plan and Citizen Participation Plan, will be developed for submission as dictated by the HUD submission deadlines.

Task 214—Programing support: Create summaries of various plans for submission to IHDA, establish criteria for supporting affordable and supportive housing to ensure higher rate of success with grant applications such as LIHTC. Provide necessary support for developers, builders, not-for-profits, municipalities, BHA, County and others for housing related grant applications; Review municipal regulations to identify opportunities for changes for consistency and in favor of the regional housing initiatives; Explore establishing new programing or support expansion of existing programing to forward the goals of the regional housing initiative.

Task 207— Housing Toolkit: Compile local and state resources that support the regional housing initiatives and make them available in an interactive format via MCRPC website; Research new tools and best practices that should be considered in our community.

Task 208 - Other projects that may arise in support of this element.

Work products

Work products over the next five years include a regional consolidated plan, completion of assessment of fair housing, completion of citizen participation plans,

REGIONAL HOUSING INITIATIVES BUDGET

Direct Non-Salary Expenses	
Advertising	\$0
Reference Materials	\$0
Miscellaneous	\$3,446
Postage	\$0
Professional Services	\$0
Reproduction	\$0
Supplies	\$0
Software and Support	\$0
Travel and Training	\$2,500
TOTAL	\$5,946

Direct Salaries		
Staff Position	Time (Hours)	Dollar Total
Executive Director	100	\$6,100
Senior Planner—Transportation	0	\$0
Associate Planner—Comp	0	\$0
Community Planner 1	0	\$0
Community Planner 2	1,150	\$30,475
Office Manager	0	\$0
Temporary/Part-Time (experienced)	0	\$0
Temporary/Part-Time (entry level)	100	\$1,200
TOTAL	1,350	\$37,775

Indirect Costs	\$16,462
Adjusted Salaries (Direct Salaries plus Indirect)	\$54,237
TOTAL PROJECT COSTS	\$60,183

Funding Sources	
CDBG (COB - \$30K AND TON - \$20K)	\$50,000
Connect Transit Service Agreement	\$10,000
Regional Service Agreement	\$183
Total Funding	\$60,183

Work Element 300—Comprehensive Planning and Technical Assistance

This component seeks to improve coordination between land use and transportation planning in a manner that supports the economic vitality of the metropolitan area. It strives to promote smart growth, protect and enhance the environment, promote energy conservation and improve the quality of life and place in Bloomington-Normal urbanized area.

Accomplishments during FY 2018

- Successful completion of Town of Normal Comprehensive Plan.
- Successful completion of BN Home—Regional Housing Study.
- Provided assistance to City staff, health coalitions, not-for-profit organizations, educational institutions and other entities working towards implementing the comprehensive plans.

Planned activities during FY 2019

Task 301 — Regional Comprehensive Plan: Conduct rural planning activities such as data and information information gathering in support of the Regional Comprehensive Planning efforts. Establish partnerships with a variety of agencies including Illinois Institute of Rural Affairs, LISC, McLean County and other rural grass roots groups to carry out these activities. These activities will feed into the Regional Comprehensive Plan scheduled to begin in FY 2021.

Task 302—Coordination of development activity: Work with municipal and other partners to track the progress of the plans led by MCRPC; Coordinate the long-standing intergovernmental meetings to monitor the development activity for consistency with the adopted long range plans; Revise Consistency Review Forms to fit the current Comprehensive Plans; Work with McLean County GIS group for integration of development monitoring process with GIS.

Task 303—Toolkit: Create an online toolkit that will be a one stop shop for community development resources currently available in our community and potential tools identified in the comprehensive plans.

Task 304—Environmental planning: Partner with EAC in regional energy planning.

Task 305 - Transportation and Land use Connection (TLC) program: This grant program intends to help implement projects identified in the Comprehensive Plan and the LRTP.

Task 306- Other projects that may arise in support of this element.

Work products

Implementation Toolkit; Regional Energy Plan; Plan Tracking Tool progress; Interactive Consistency Review Form

COMPREHENSIVE PLANNING & TECHNICAL ASSISTANCE BUDGET

Direct Non-Salary Expenses	
Advertising	\$0
Dues and Subscriptions	\$1,384
Miscellaneous	\$0
Postage	\$0
Professional Services	\$97,846
Reproduction	\$1,500
Supplies	\$0
Software and Support	\$0
Travel and Training	\$0
TOTAL	\$100,730

Direct Salaries		
Staff Position	Time (Hours)	Dollar Total
Executive Director	250	\$15,250
Senior Planner—Transportation	350	\$12,950
Associate Planner—Comp	900	\$21,600
Community Planner 1	300	\$8,400
Community Planner 2	0	\$0
Office Manager	150	\$3,150
Temporary/Part-Time (experienced)	200	\$8,000
Temporary/Part-Time (entry level)	400	\$4,800
TOTAL	2,550	\$74,150

Indirect Costs	\$32,314
Adjusted Salaries (Direct Salaries plus Indirect)	\$106,464
TOTAL PROJECT COSTS	\$207,194

Funding Sources	
IDOT—PL	\$75,705
IDOT—Section 5305(d)	\$17,390
Regional Service Agreement	\$23,274
State Metro Grants	\$90,825
Total Funding	\$207,194

Work Element 400—Transportation Planning and Technical Assistance

This work element encompasses activities that directly support the implementation of the projects and programs outlined long-range transportation planning (LRTP).

Accomplishments during FY 2018

- Successfully implemented the 3rd annual Good To Go Commuter Challenge. This challenge aims to improve resident health, increase the use of sustainable modes of transportation to improve air quality. More information at goodtogomclean.org
- Completed and Adopted BN Mobile – 2045 Long Range Transportation Plan
- Completed the regional freight study
- Completed and adopted the Public Participation Plan and the Title VI plan
- Issued an RFQ and hiring a consultant to carry out regional freight planning.

Planned activities during FY 2019

Task 401—Transportation administration and technical assistance: Providing technical assistance on transportation projects such as East Side Highway and complete streets and day to day operations of supporting regional transportation system including the review of local transportation projects and plans, issuing RFQs and managing consultants for special transportation studies, applying for and administering grants.

Task 402—Transportation Improvement Program (TIP): Preparation and development of TIP for the implementation of area transportation projects over the ensuing five years. Tasks could include publicizing and holding hearings and meetings on the TIP projects and potential amendments to the TIP.

Task 403—Complete Streets and Transit Oriented Development: Work with the municipalities to identify opportunities for implementation of complete streets policies; work with Connect Transit on their short- and long-range transportation plan; Create guidelines for transit oriented development and complete streets.

Task 404—Sustainable Transportation Programing: Continue to support expansion of sustainable transportation programs such as Good To Go Commuter challenge, PARKing Day, Bike Share etc.

Task 405— Regional Health Initiatives: MCRPC will partner with the McLean County Wellness Coalition and other partners to promote active transportation and other health initiatives.

Task 406—BN Mobile – LRTP: Monitor progress and update LRTP as necessary.

Task 407—Travel Demand Modelling: This task will involve updating and maintaining a regional travel demand model capable of estimating multi-modal trips and travel patterns.

Work products

BN Mobile, 2045 long-range transportation plan for Bloomington-Normal urbanized area; FY 2019- FY2024 TIP; Travel Demand Model; Good To Go Commuter Challenge; Bike and Pedestrian Counts

TRANSPORTATION PLANNING AND TECHNICAL ASSISTANCE BUDGET

Direct Non-Salary Expenses	
Advertising	\$1,380
Dues and Subscriptions	\$0
Miscellaneous	\$1,000
Postage	\$0
Professional Services	\$32,000
Reproduction	\$1,500
Supplies	\$0
Software and Support	\$15,000
Travel and Training	\$2,500
TOTAL	\$53,380

Direct Salaries		
Staff Position	Time (Hours)	Dollar Total
Executive Director	400	\$24,400
Senior Planner—Transportation	920	\$34,040
Associate Planner—Comp	0	\$0
Community Planner 1	350	\$9,800
Community Planner 2	0	\$0
Office Manager	100	\$2,100
Temporary/Part-Time (experienced)	450	\$18,000
Temporary/Part-Time (entry level)	0	\$0
TOTAL	2,220	\$88,340

Indirect Costs	\$38,498
Adjusted Salaries (Direct Salaries plus Indirect)	\$126,838
TOTAL PROJECT COSTS	\$180,218

Funding Sources	
IDOT—PL	\$73,656
IDOT—Section 5305(d)	\$16,919
Regional Service Agreement	\$22,644
Connect Transit Service Agreement	\$35,000
SPR Funds	\$32,000
Total Funding	\$180,219

Work Element 500—Data Gathering, Technology, and Smart Cities

This work element is geared towards measuring the outcomes plans and programs facilitated or led by MCRPC. This includes LRTP, comprehensive plans, economic development, housing, energy, and more.

Accomplishments during FY 2018

- Established performance metrics, baselines and targets, as appropriate, in the recently adopted long-range plans
- Created templates on the new MCRPC website, currently underway, to track and measure progress of the plans easily.
- Created BN Vitals economic dashboard with over 220 metrics. This is scheduled to be launched in July 2018.
- Addressed smart cities and the impacts of technology extensively in the recently adopted Town of Normal Comprehensive Plan and the 2045 LRTP
- Coordinated a viewing of impacts of autonomous vehicles on real-estate hosted by Urban Land Institute. This was well attended by area realtors and architects.
- Applied for a grant that would allow for installing inductive loops and sensors that will facilitate bicycle and pedestrian counts in the twin cities

Planned activities during FY 2019

Task 501—Research and outreach: Every aspect of the community is being effected by technology. MCRPC is committed to bringing the research and education on data, smart cities and technology to a variety of stakeholders in McLean County.

Task 502—Innovative projects: There is a great deal of innovation (or disruption depending on how you look at it) happening in civic space. Transportation and land use are very much impacted by it. MCRPC is ready to embark on opportunities for innovation. Given the fast pace of technology advancements and the inherent disruptive nature, testing ideas gives the flexibility needed to test ideas out. MCRPC will work with local government partners in the designate areas to test ideas that will help showcase progress, minimize risk, and eventually scale up.

Task 503—Data gathering and dashboard: Deploy a series of tools and technologies to gather and present data in an accessible and easy to comprehend format. This could include metrics on economic development, housing, transportation, environment, land use and more.

Task 504—Spatial Data and Maps: Gather and distribute spatial data; Much of the spatial information gathered during the comprehensive planning phases for Bloomington and Normal was done independently for each municipality. These maps and spatial information will be of greater regional benefit when presented together.

Work products

Innovation District Designation and Task Force; Pilot Projects; Data Dashboards; Spatial Data and Maps.

DATA GATHERING, PERFORMANCE EVALUATION, AND IMPLEMENTATION BUDGET

Direct Non-Salary Expenses	
Advertising	\$0
Dues and Subscriptions	\$0
Miscellaneous	\$0
Postage	\$0
Professional Services	\$0
Reproduction	\$0
Supplies	\$0
Software and Support	\$20,000
Travel and Training	\$5,000
TOTAL	\$25,000

Direct Salaries		
Staff Position	Time (Hours)	Dollar Total
Executive Director	400	\$24,400
Senior Planner—Transportation	200	\$7,400
Associate Planner—Comp	250	\$6,000
Community Planner 1	700	\$19,600
Community Planner 2	350	\$9,275
Office Manager	200	\$4,200
Temporary/Part-Time (experienced)	0	\$0
Temporary/Part-Time (entry level)	650	\$7,800
TOTAL	2,750	\$78,675

Indirect Costs	\$34,286
Adjusted Salaries (Direct Salaries plus Indirect)	\$112,961
TOTAL PROJECT COSTS	\$137,961

Funding Sources	
IDOT—PL	\$89,753
IDOT—Section 5305(d)	\$20,616
Regional Service Agreement	\$27,592
Total Funding	\$137,961

Work Element 600—Education and Outreach

This work element involves educating the community on the importance of their engagement in planning for the future of their community. It involves gathering meaningful input on transportation and comprehensive plans from residents (including corporate, institutional and not-for-profit citizens) of all walks of the community utilizing both traditional and non-traditional methods.

Accomplishments during FY 2018

- Increased awareness of MCRPC, its role, purpose, and programs in the community.
- Increased the number of community partnerships with over 150 agencies, organizations and not-for-profit entities.
- MCRPC's 13th annual community information forum and technical talk featuring the keynote speaker Bob Bennett, CIO of Kansas City, Missouri- focus on smart cities
- MCRPC Website revamp; Information organized in an easy to find

Planned activities during FY 2019

Task 601—Website and social media: Make MCRPC website the one stop shop for all things planning and community development; MCRPC style guide to help create a uniform look, streamlined communications and brand identity.

Task 602—Outreach efforts: Educational and outreach activities aligned with identified priorities; providing forums for public, private and not-for profits to come together to discuss common growth and development aspects; bringing subject matter experts to the community; presentations within the community on growth and development activities; presentations at state and national conferences about community accomplishments.

Task 603—Publications: Publish *Visions* newsletters highlighting innovative planning practices and implementation of the adopted land use and transportation plans.

Work products

A new MCRPC website; Two Visions newsletters; 2019 Information Forum.

EDUCATION AND OUTREACH AND PROFESSIONAL DEVELOPMENT BUDGET

Direct Non-Salary Expenses	
Advertising	\$0
Dues and Subscriptions	\$1,000
Miscellaneous	\$3,140
Postage	\$400
Professional Services	\$5,501
Reproduction	\$700
Supplies	\$425
Software and Support	\$3,000
Travel and Training	\$3,000
TOTAL	\$17,166

Direct Salaries		
Staff Position	Time (Hours)	Dollar Total
Executive Director	200	\$12,200
Senior Planner—Transportation	130	\$4,810
Associate Planner—Comp	300	\$7,200
Community Planner 1	350	\$9,800
Community Planner 2	250	\$6,625
Office Manager	450	\$9,450
Temporary/Part-Time (experienced)	0	\$0
Temporary/Part-Time (entry level)	0	\$0
TOTAL	1,680	\$50,085

Indirect Costs	\$21,827
Adjusted Salaries (Direct Salaries plus Indirect)	\$71,912
TOTAL PROJECT COSTS	\$89,078

Funding Sources	
IDOT—PL	\$56,324
IDOT—Section 5305(d)	\$12,938
Regional Service Agreement	\$17,316
Information Forum Registrations	\$2,500
Total Funding	\$89,078

Work Element 700—Human Service Transportation Plan (HSTP)

HSTP is designed to meet the needs of the transportation disadvantaged population, including persons with disabilities, individuals with lower incomes, older adults and racial and ethnic minorities. MCRPC administers the Illinois Department of Transportation Human Services Transportation Plan process for Region 6, a five-county area in east central Illinois which includes Ford, Iroquois, Kankakee, Livingston, and McLean Counties. MCRPC staff serve as regional coordinators, facilitating program and resource coordination among governments, transportation providers, and social service agencies throughout the region.

Accomplishments during FY 2017

- Confirmed reorganization of technical and policy committees into joint committee
- Assisted in submission of successful vehicle purchase grant requests by SHOW BUS of Chenoa, McLean County and Futures Unlimited of Pontiac, Livingston County

Planned activities during FY 2019

Task 701—HSTP administration and technical assistance: This includes day to day operations of supporting regional human service transportation system including coordinating the quarterly meetings, consultation with state and local agencies regarding improvements for non-emergency medical transport services and coordination with Veterans' Administration staff to streamline veterans' access to transportation to medical service providers.

Task 702—HST Plan Updates and monitoring progress: Amend text and maps to integrate the urban HST plans and activities within McLean and Kankakee counties with the Region 6 Plan. Work towards its implementation and monitor its progress.

Task 703—Mobility Management: Work with the service providers, social service organizations, veterans' administration, hospitals and other medical providers to facilitate transit connections. Create an HSTP dashboard of data, maps, service provider information and other resources. Create a web page on MCRPC's new website including the regional HSTP dashboard of data and information to enable easy access to participating agencies and the general public within Region 6 and beyond.

Task 704—Rural Transit Pilot Project: Using McLean County as a pilot, create a detailed action plan to improve rural transportation access.

Work products

Consolidated Rural/Urban HST Plan; McLean County (pilot) HST Action Strategy; HSTP page on the new MCRPC website; HSTP Dashboard;

HSTP BUDGET

Direct Non-Salary Expenses

Advertising	\$2,153
Dues and Subscriptions	\$0
Miscellaneous	\$0
Postage	\$0
Professional Services	\$30,000
Reproduction	\$0
Supplies	\$20
Software and Support	\$6,500
Travel and Training	\$1,000
TOTAL	\$39,673

Direct Salaries

Staff Position	Time (Hours)	Dollar Total
Executive Director	100	\$6,100
Senior Planner—Transportation	350	\$12,950
Associate Planner—Comp	50	\$1,200
Community Planner 1	150	\$4,200
Community Planner 2	0	\$0
Office Manager	50	\$1,050
Temporary/Part-Time (experienced)	0	\$0
Temporary/Part-Time (entry level)	0	\$0
TOTAL	700	\$25,500

Indirect Costs	\$11,113
Adjusted Salaries (Direct Salaries plus Indirect)	\$36,613
TOTAL PROJECT COSTS	\$76,286

Funding Sources

IDOT (Service Agreement)	\$76,286
Total Funding	\$76,286

FY 2018 Carryover

MCRPC anticipates carrying over \$84, 000 in federal funds from FY 2018 to FY 2019. This amount is in addition to \$363, 301 of FHWA PL and FTA funds identified in Chart 2.1 on page 21. The carry over funds will be used for professional services under the Comprehensive Planning category.



APPENDIX A

FY 2019 Indirect Cost Allocation Plan (ICAP)

The indirect cost allocation plan (ICAP) presents the indirect cost rate and supporting financial information.



115 E. Washington Street, #M103
 Bloomington, Illinois 61701
 (309) 828-4331
www.mcplan.org